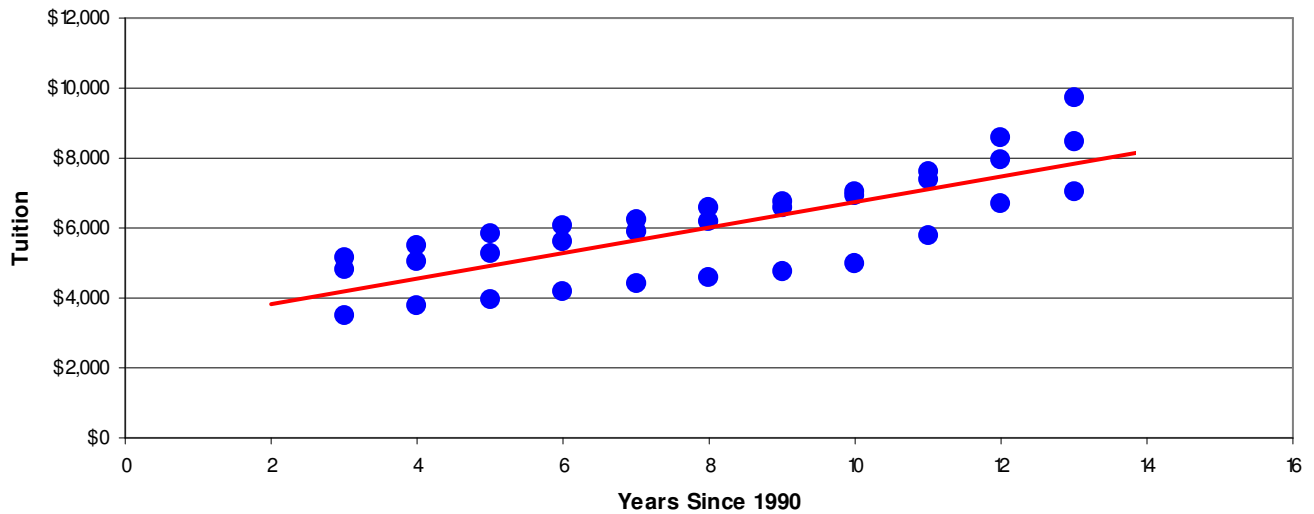


Public University Tuition History



- Equation:
 - x variable represents:
 - y variable represents:
- Sentence describing what the equation means in terms of the data.
- Extrapolation
 - Future college tuition of student that just entered HS and how I came up with that tuition amount.
 - Future college tuition of student that just entered kindergarten and how I came up with that tuition amount.
- Colleges used in project:

Note: Must have the original hard copies of data collected and neatly organized for credit.